

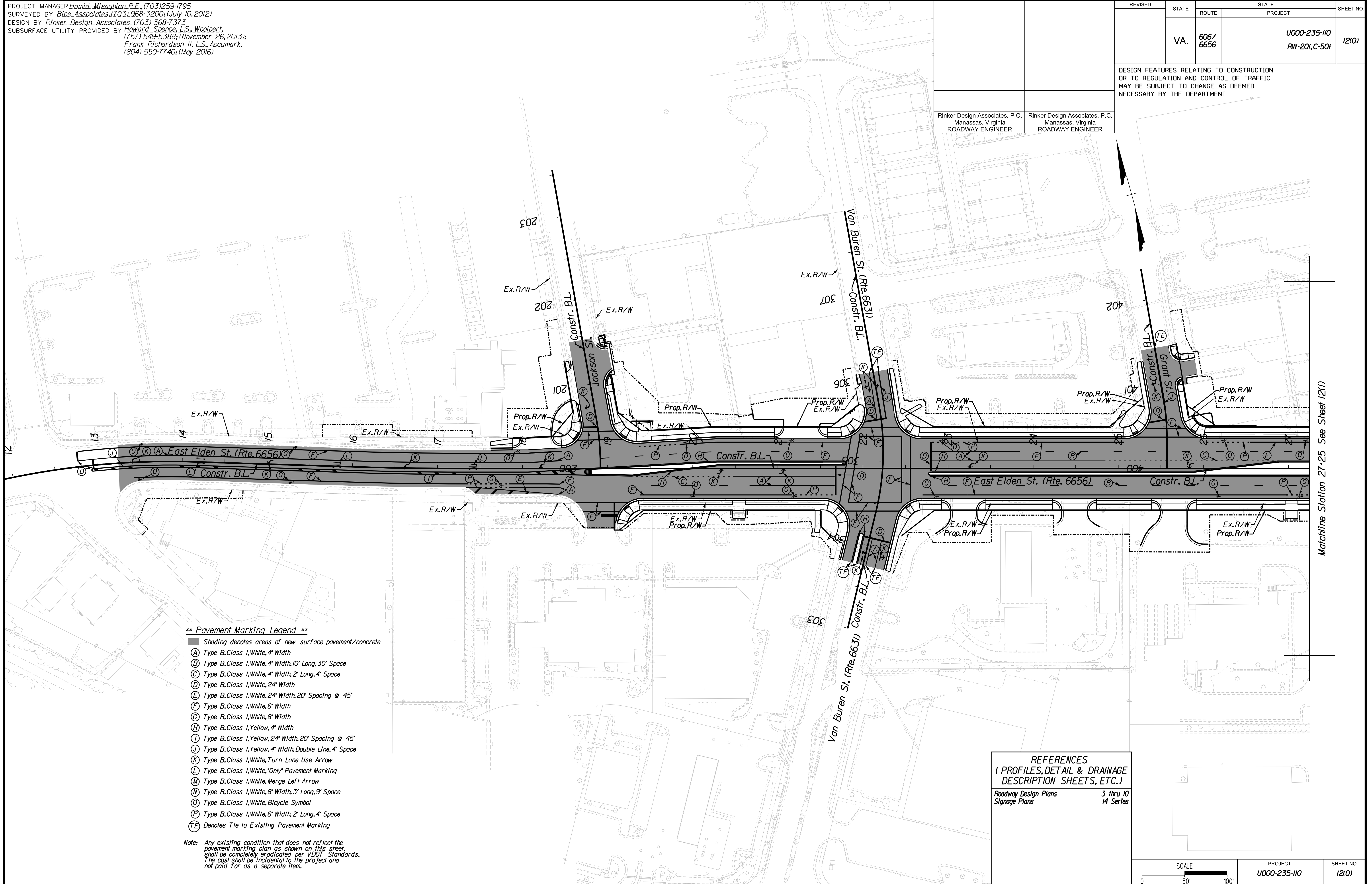
PROJECT MANAGER *Hamid, Misaghian, P.E., (703) 259-1795*  
SURVEYED BY *Blce Associates, (703) 968-3200; (July 10, 2012)*  
DESIGN BY *Rinker Design Associates, (703) 368-7373*  
SUBSURFACE UTILITY PROVIDED BY *Howard Spence, L.S., Woolpert, (757) 549-5388; (November 26, 2013);*  
*Frank Richardson II, L.S., AccuMark, (804) 550-7740; (May 2016)*

REVISED	STATE	ROUTE	STATE	PROJECT	SHEET NO.
	VA.	606/ 6656		U000-235-110 RW-201.C-501	12(1)

DESIGN FEATURES RELATING TO CONSTRUCTION OR TO REGULATION AND CONTROL OF TRAFFIC MAY BE SUBJECT TO CHANGE AS DEEMED NECESSARY BY THE DEPARTMENT

Rinker Design Associates, P.C.  
Manassas, Virginia  
ROADWAY ENGINEER

Rinker Design Associates, P.C.  
Manassas, Virginia  
ROADWAY ENGINEER



- \*\* Pavement Marking Legend \*\***
- Shading denotes areas of new surface pavement/concrete
  - (A) Type B, Class I, White, 4" Width
  - (B) Type B, Class I, White, 4" Width, 10' Long, 30' Space
  - (C) Type B, Class I, White, 4" Width, 2' Long, 4' Space
  - (D) Type B, Class I, White, 24" Width
  - (E) Type B, Class I, White, 24" Width, 20' Spacing @ 45'
  - (F) Type B, Class I, White, 6" Width
  - (G) Type B, Class I, White, 8" Width
  - (H) Type B, Class I, Yellow, 4" Width
  - (I) Type B, Class I, Yellow, 24" Width, 20' Spacing @ 45'
  - (J) Type B, Class I, Yellow, 4" Width, Double Line, 4' Space
  - (K) Type B, Class I, White, Turn Lane Use Arrow
  - (L) Type B, Class I, White, "Only" Pavement Marking
  - (M) Type B, Class I, White, Merge Left Arrow
  - (N) Type B, Class I, White, 8" Width, 3' Long, 9' Space
  - (O) Type B, Class I, White, Bicycle Symbol
  - (P) Type B, Class I, White, 6" Width, 2' Long, 4' Space
  - (T) Denotes Tie to Existing Pavement Marking

Note: Any existing condition that does not reflect the pavement marking plan as shown on this sheet, shall be completely eradicated per VDOT Standards. The cost shall be incidental to the project and not paid for as a separate item.

**REFERENCES**  
(PROFILES, DETAIL & DRAINAGE DESCRIPTION SHEETS, ETC.)

Roadway Design Plans	3 thru 10
Signage Plans	14 Series

SCALE 0 50' 100'	PROJECT U000-235-110	SHEET NO. 12(1)
---------------------	-------------------------	--------------------

PH PLANS THESE PLANS ARE UNFINISHED AND UNAPPROVED AND MAY NOT BE USED FOR RIGHT OF WAY OR CONSTRUCTION. ADDITIONAL EASEMENTS FOR UTILITY RELOCATIONS MAY BE REQUIRED BEYOND THE PROPOSED RIGHT- OF-WAY SHOWN ON THESE PLANS. THESE PLANS ARE UNDER TECHNICAL REVIEW BY VDOT AND TOWN OF HERNDON. PLANS ARE SUBJECT TO CHANGE PRIOR TO PUBLIC HEARING.

8/30/2016  
 NORTHERN VIRGINIA DISTRICT  
 Rinker Design Associates, P.C.  
 Office Locations  
 3115 Corporate Boulevard  
 Manassas, VA 20108  
 Phone: (703) 368-7373  
 Fax: (703) 368-7373  
 3115 Corporate Boulevard  
 Manassas, VA 20108  
 Phone: (703) 368-7373  
 Fax: (703) 368-7373

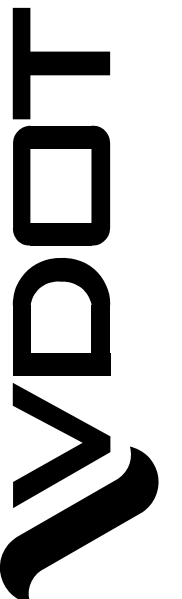
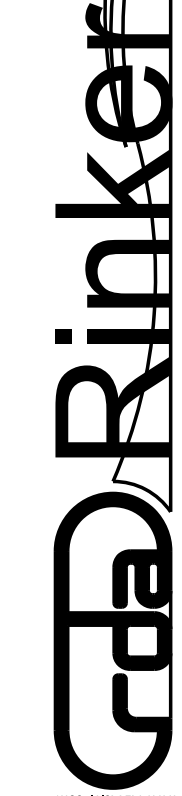
Matchline Station 27+25 See Sheet 12(1)

PROJECT MANAGER *Hamid, Misaghlan, P.E., (703) 259-1795*  
SURVEYED BY *Bisce Associates, (703) 968-3200; (July 10, 2012)*  
DESIGN BY *Rinker Design Associates, (703) 368-7373*  
SUBSURFACE UTILITY PROVIDED BY *Howard Spence, L.S., Woolpert, (757) 549-5388; (November 26, 2013); Frank Richardson II, L.S., AccuMark, (804) 550-7740; (May 2016)*

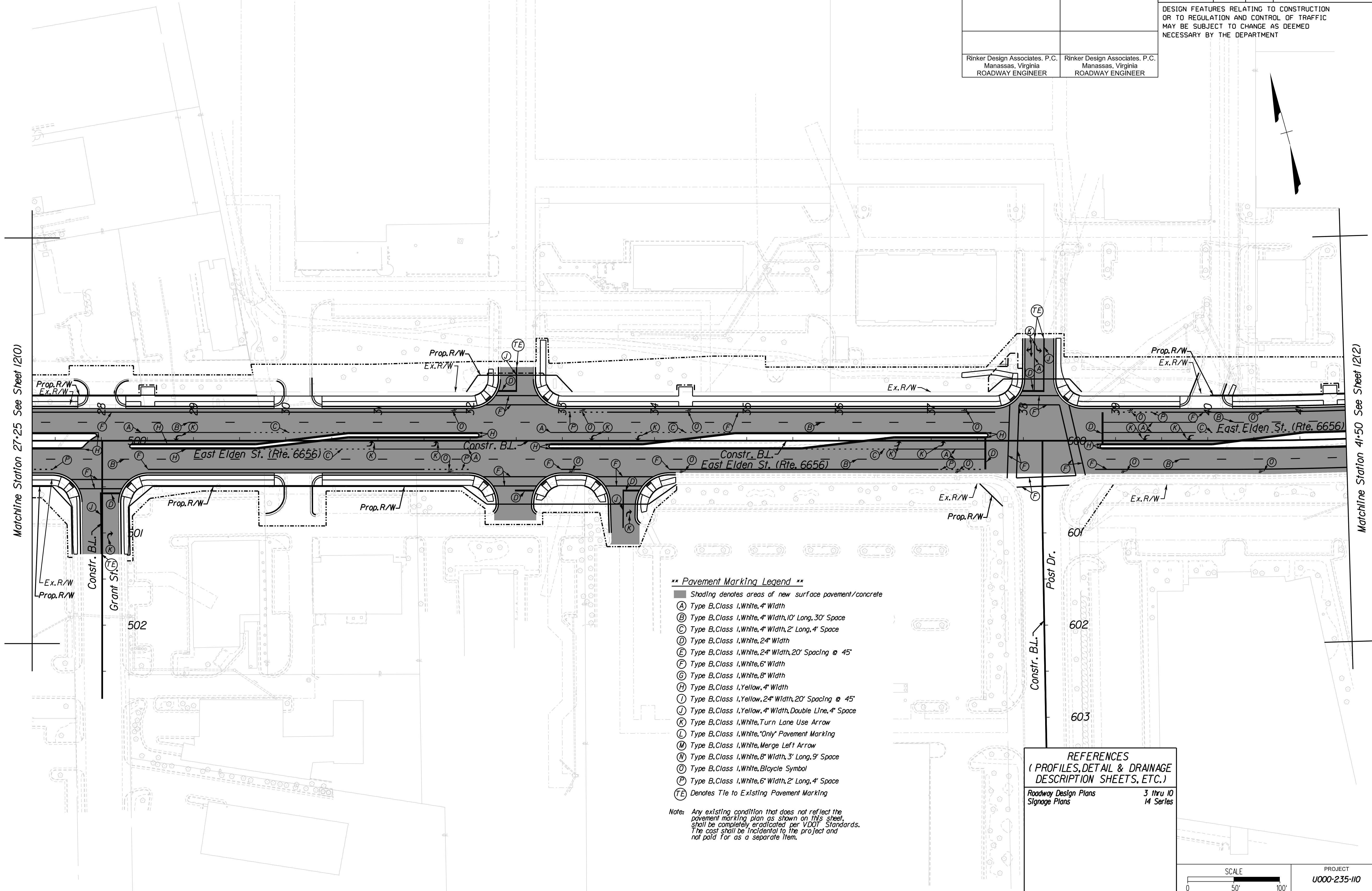
REVISED	STATE	ROUTE	STATE PROJECT	SHEET NO.
	VA.	606/ 6656	U000-235-110 RW-201.C-501	12(1)
DESIGN FEATURES RELATING TO CONSTRUCTION OR TO REGULATION AND CONTROL OF TRAFFIC MAY BE SUBJECT TO CHANGE AS DEEMED NECESSARY BY THE DEPARTMENT				
Rinker Design Associates, P.C. Manassas, Virginia ROADWAY ENGINEER		Rinker Design Associates, P.C. Manassas, Virginia ROADWAY ENGINEER		

Office Locations  
3115 Corporate Boulevard  
Manassas, VA 20108  
Phone: (703) 368-7373  
Fax: (703) 368-7373

Design Associates, P.C.  
Civil Engineering, Transportation, Environmental  
Right of Way Services



NORTHERN VIRGINIA DISTRICT



- \*\* Pavement Marking Legend \*\***
- Shading denotes areas of new surface pavement/concrete
  - (A) Type B, Class 1, White, 4" Width
  - (B) Type B, Class 1, White, 4" Width, 10' Long, 30' Space
  - (C) Type B, Class 1, White, 4" Width, 2' Long, 4' Space
  - (D) Type B, Class 1, White, 2 1/2" Width
  - (E) Type B, Class 1, White, 2 1/2" Width, 20' Spacing @ 45°
  - (F) Type B, Class 1, White, 6" Width
  - (G) Type B, Class 1, White, 8" Width
  - (H) Type B, Class 1, Yellow, 4" Width
  - (I) Type B, Class 1, Yellow, 2 1/2" Width, 20' Spacing @ 45°
  - (J) Type B, Class 1, Yellow, 4" Width, Double Line, 4' Space
  - (K) Type B, Class 1, White, Turn Lane Use Arrow
  - (L) Type B, Class 1, White, "Only" Pavement Marking
  - (M) Type B, Class 1, White, Merge Left Arrow
  - (N) Type B, Class 1, White, 8" Width, 3' Long, 9' Space
  - (O) Type B, Class 1, White, Bicycle Symbol
  - (P) Type B, Class 1, White, 6" Width, 2' Long, 4' Space
  - (TE) Denotes Tie to Existing Pavement Marking

Note: Any existing condition that does not reflect the pavement marking plan as shown on this sheet shall be completely eradicated per VDOT Standards. The cost shall be incidental to the project and not paid for as a separate item.

**REFERENCES**  
(PROFILES, DETAIL & DRAINAGE DESCRIPTION SHEETS, ETC.)

Roadway Design Plans	3 thru 10
Signage Plans	14 Series

SCALE 0 50' 100'	PROJECT U000-235-110	SHEET NO. 12(1)
---------------------	-------------------------	--------------------

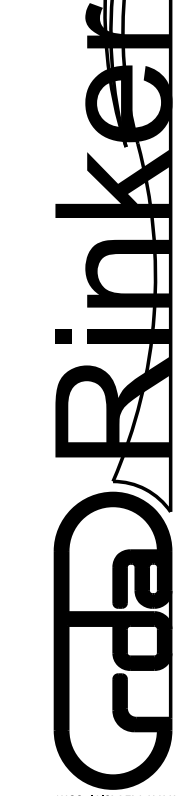
PH PLANS THESE PLANS ARE UNFINISHED AND UNAPPROVED AND MAY NOT BE USED FOR RIGHT OF WAY OR CONSTRUCTION. ADDITIONAL EASEMENTS FOR UTILITY RELOCATIONS MAY BE REQUIRED BEYOND THE PROPOSED RIGHT- OF-WAY SHOWN ON THESE PLANS. THESE PLANS ARE UNDER TECHNICAL REVIEW BY VDOT AND TOWN OF HERNDON. PLANS ARE SUBJECT TO CHANGE PRIOR TO PUBLIC HEARING.

PROJECT MANAGER *Hamid, Misaghian, P.E.* (703) 259-1795  
SURVEYED BY *Blce Associates*, (703) 968-3200; (July 10, 2012)  
DESIGN BY *Rinker Design Associates*, (703) 368-7373  
SUBSURFACE UTILITY PROVIDED BY *Howard Spence, L.S., Woolpert*,  
(757) 549-5388; (November 26, 2013);  
*Frank Richardson II, L.S., Accumar*,  
(804) 550-7740; (May 2016)

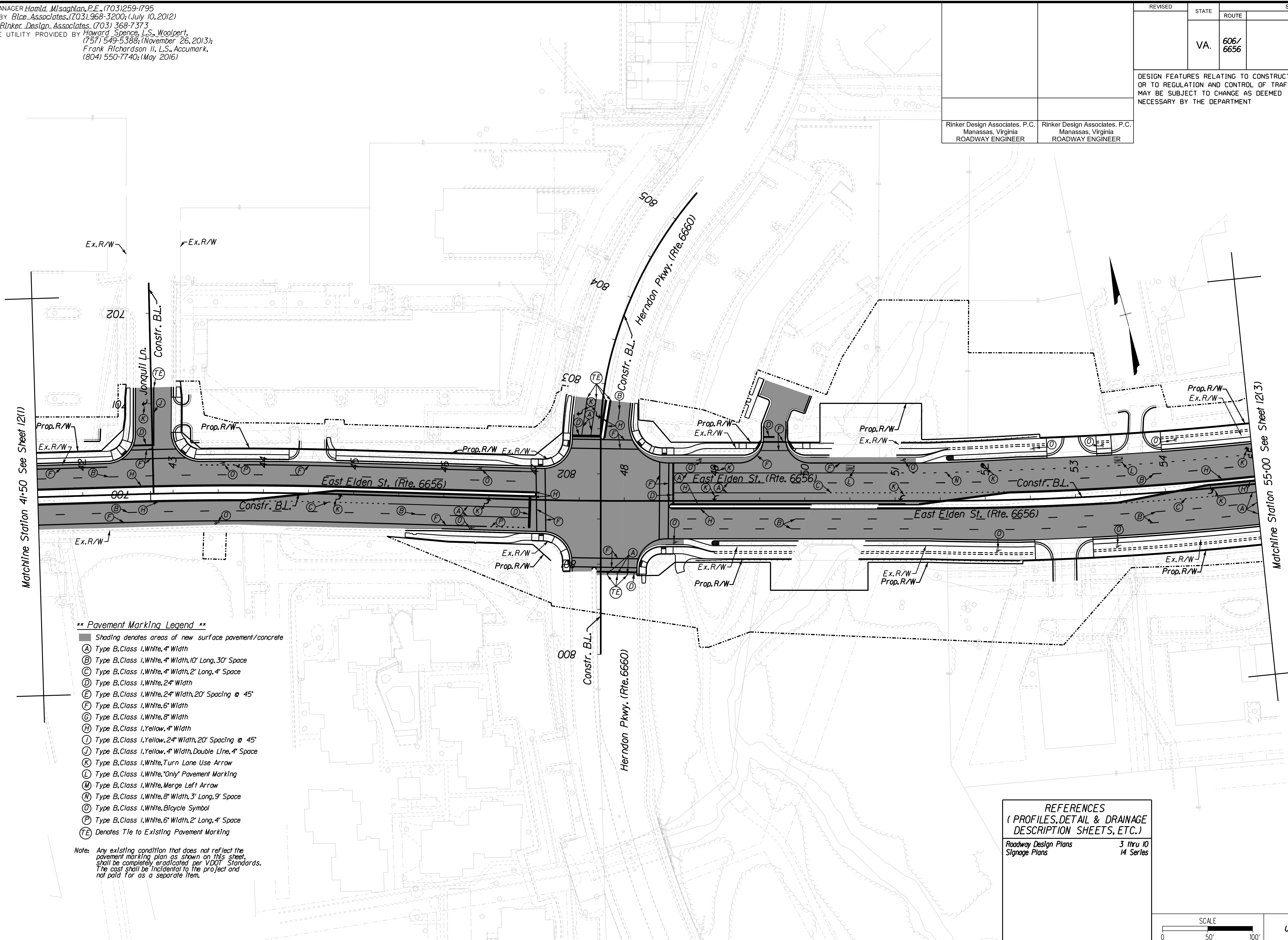
REVISED	STATE	ROUTE	PROJECT	SHEET NO.
	VA.	606/ 6656	U000-235-110 RW-201.C-501	12(2)
DESIGN FEATURES RELATING TO CONSTRUCTION OR TO REGULATION AND CONTROL OF TRAFFIC MAY BE SUBJECT TO CHANGE AS DEEMED NECESSARY BY THE DEPARTMENT				
Rinker Design Associates, P.C. Manassas, Virginia ROADWAY ENGINEER		Rinker Design Associates, P.C. Manassas, Virginia ROADWAY ENGINEER		

Office Locations  
3115 Corporate Boulevard  
Manassas, VA 20108  
Phone: (703) 368-7373  
Fax: (703) 368-7373

Design Associates, P.C.  
Civil Engineering, Transportation, Environmental  
Right of Way Services



VDOT  
NORTHERN VIRGINIA  
DISTRICT



- \*\* Pavement Marking Legend \*\***
- Shading denotes areas of new surface pavement/concrete
  - (A) Type B, Class I, White, 4" Width
  - (B) Type B, Class I, White, 4" Width, 10' Long, 30' Space
  - (C) Type B, Class I, White, 4" Width, 2' Long, 4' Space
  - (D) Type B, Class I, White, 24" Width
  - (E) Type B, Class I, White, 24" Width, 20' Spacing @ 45°
  - (F) Type B, Class I, White, 6" Width
  - (G) Type B, Class I, White, 8" Width
  - (H) Type B, Class I, Yellow, 4" Width
  - (I) Type B, Class I, Yellow, 24" Width, 20' Spacing @ 45°
  - (J) Type B, Class I, Yellow, 4" Width, Double Line, 4' Space
  - (K) Type B, Class I, White, Turn Lane Use Arrow
  - (L) Type B, Class I, White, "Only" Pavement Marking
  - (M) Type B, Class I, White, Merge Left Arrow
  - (N) Type B, Class I, White, 8" Width, 3" Long, 9" Space
  - (O) Type B, Class I, White, Bicycle Symbol
  - (P) Type B, Class I, White, 6" Width, 2' Long, 4' Space
  - (TE) Denotes Tie to Existing Pavement Marking

Note: Any existing condition that does not reflect the pavement marking plan as shown on this sheet, shall be completely eradicated per VDOT Standards. The cost shall be incidental to the project and not paid for as a separate item.

**REFERENCES**  
(PROFILES, DETAIL & DRAINAGE DESCRIPTION SHEETS, ETC.)

Roadway Design Plans	3 thru 10
Signage Plans	14 Series

SCALE 0 50' 100'	PROJECT U000-235-110	SHEET NO. 12(2)
---------------------	-------------------------	--------------------

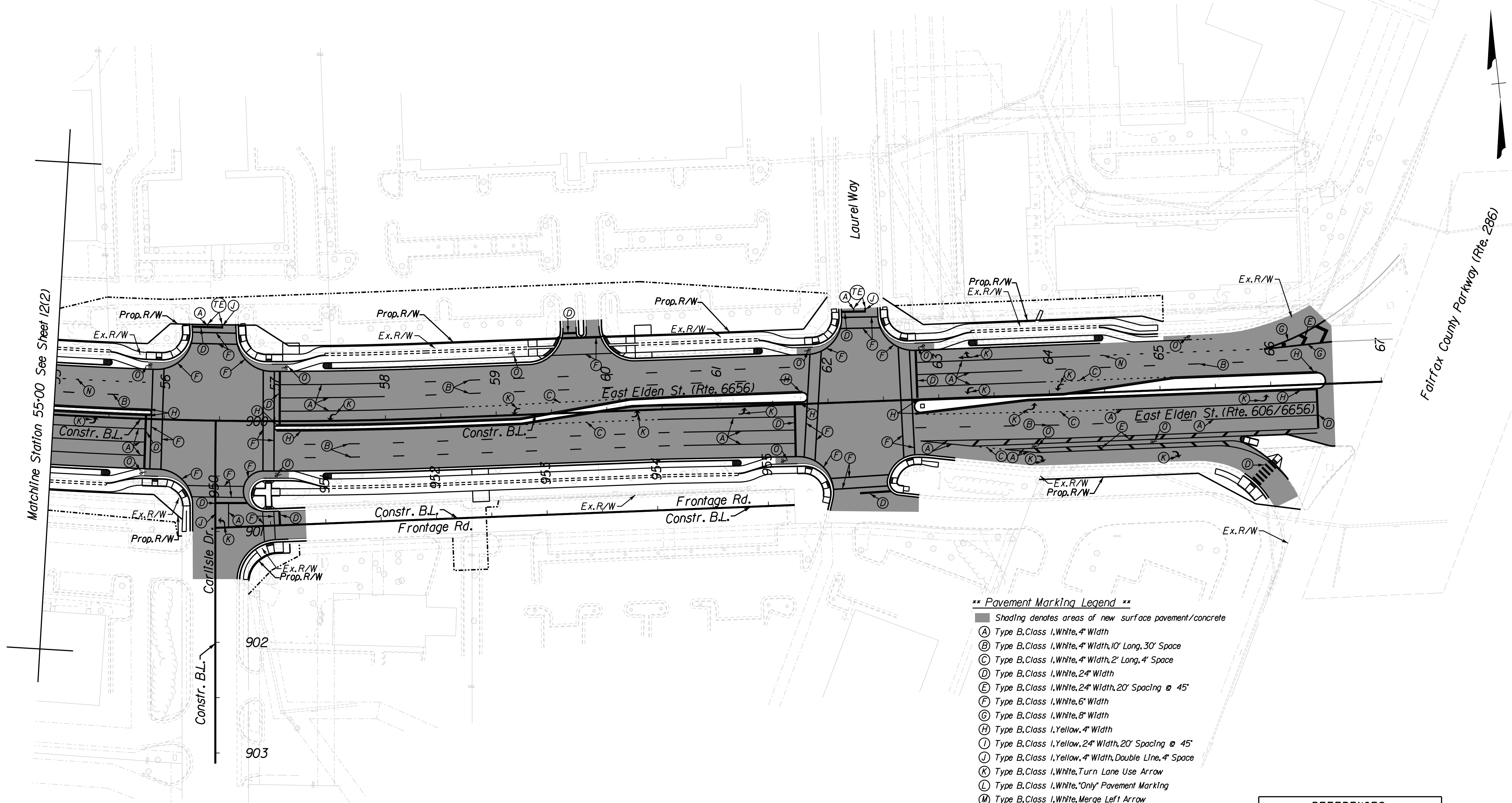
PH PLANS THESE PLANS ARE UNFINISHED AND UNAPPROVED AND MAY NOT BE USED FOR RIGHT OF WAY OR CONSTRUCTION. ADDITIONAL EASEMENTS FOR UTILITY RELOCATIONS MAY BE REQUIRED BEYOND THE PROPOSED RIGHT- OF-WAY SHOWN ON THESE PLANS. THESE PLANS ARE UNDER TECHNICAL REVIEW BY VDOT AND TOWN OF HERNDON. PLANS ARE SUBJECT TO CHANGE PRIOR TO PUBLIC HEARING.

PROJECT MANAGER *Hamid, Misaghian, P.E., (703) 259-1795*  
SURVEYED BY *Bisce Associates, (703) 968-3200; (July 10, 2012)*  
DESIGN BY *Rinker Design Associates, (703) 368-7373*  
SUBSURFACE UTILITY PROVIDED BY *Howard Spence, L.S., Woolpert, (757) 549-5388; (November 26, 2013);*  
*Frank Richardson II, L.S., AccuMark, (804) 550-7740; (May 2016)*

REVISED	STATE	ROUTE	PROJECT	SHEET NO.
	VA.	606/ 6656	U000-235-110 RW-201.C-501	1213
DESIGN FEATURES RELATING TO CONSTRUCTION OR TO REGULATION AND CONTROL OF TRAFFIC MAY BE SUBJECT TO CHANGE AS DEEMED NECESSARY BY THE DEPARTMENT				
Rinker Design Associates, P.C. Manassas, Virginia ROADWAY ENGINEER		Rinker Design Associates, P.C. Manassas, Virginia ROADWAY ENGINEER		

**VDOT**  
 NORTH VIRGINIA DISTRICT  
**Rinker**  
 Design Associates, P.C.  
 Civil Engineering, Transportation, Environmental, Right of Way Services

**VDOT**  
 NORTH VIRGINIA DISTRICT



**\*\* Pavement Marking Legend \*\***

- Shading denotes areas of new surface pavement/concrete
- (A) Type B, Class I, White, 4" Width
- (B) Type B, Class I, White, 4" Width, 10' Long, 30' Space
- (C) Type B, Class I, White, 4" Width, 2' Long, 4' Space
- (D) Type B, Class I, White, 24" Width
- (E) Type B, Class I, White, 24" Width, 20' Spacing @ 45°
- (F) Type B, Class I, White, 6" Width
- (G) Type B, Class I, White, 8" Width
- (H) Type B, Class I, Yellow, 4" Width
- (I) Type B, Class I, Yellow, 24" Width, 20' Spacing @ 45°
- (J) Type B, Class I, Yellow, 4" Width, Double Line, 4' Space
- (K) Type B, Class I, White, Turn Lane Use Arrow
- (L) Type B, Class I, White, "Only" Pavement Marking
- (M) Type B, Class I, White, Merge Left Arrow
- (N) Type B, Class I, White, 8" Width, 3' Long, 9' Space
- (O) Type B, Class I, White, Bicycle Symbol
- (P) Type B, Class I, White, 6" Width, 2' Long, 4' Space
- (TE) Denotes Tie to Existing Pavement Marking

Note: Any existing condition that does not reflect the pavement marking plan as shown on this sheet, shall be completely eradicated per VDOT Standards. The cost shall be incidental to the project and not paid for as a separate item.

REFERENCES	
(PROFILES, DETAIL & DRAINAGE DESCRIPTION SHEETS, ETC.)	
Roadway Design Plans	3 thru 10
Signage Plans	14 Series

SCALE 0 50' 100'	PROJECT U000-235-110	SHEET NO. 1213
---------------------	-------------------------	-------------------

PH PLANS	THESE PLANS ARE UNFINISHED AND UNAPPROVED AND MAY NOT BE USED FOR RIGHT OF WAY OR CONSTRUCTION.	ADDITIONAL EASEMENTS FOR UTILITY RELOCATIONS MAY BE REQUIRED BEYOND THE PROPOSED RIGHT- OF-WAY SHOWN ON THESE PLANS.	THESE PLANS ARE UNDER TECHNICAL REVIEW BY VDOT AND TOWN OF HERNDON. PLANS ARE SUBJECT TO CHANGE PRIOR TO PUBLIC HEARING.
----------	---	--	--