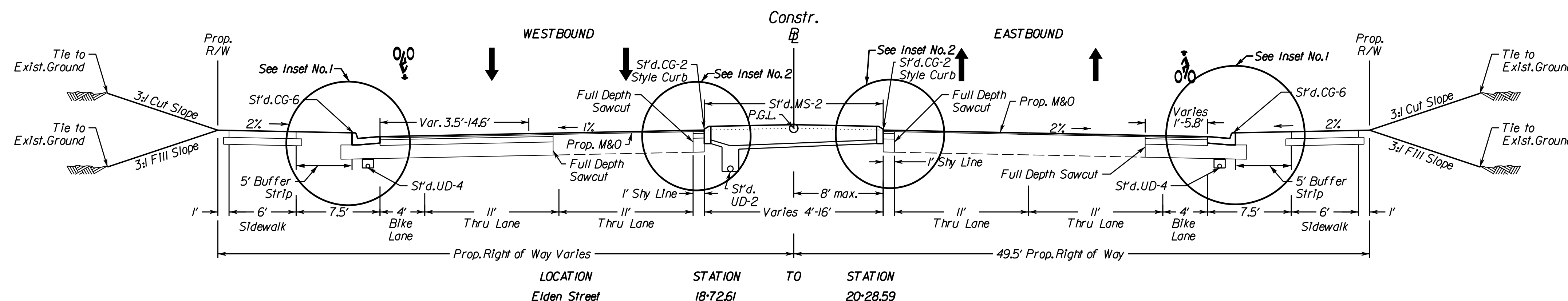


PROJECT MANAGER *Hamid Misaghian, P.E., (703) 259-1795*
 SURVEYED BY *Bice Associates, (703) 968-3200; (July 10, 2012)*
 DESIGN BY *Rinker Design Associates, (703) 368-7373*
 SUBSURFACE UTILITY PROVIDED BY *Howard Spence, L.S., Woolpert, (757) 549-5388; (November 26, 2013); Frank Richardson II, L.S., AccuMark, (804) 550-7740; (May 2016)*

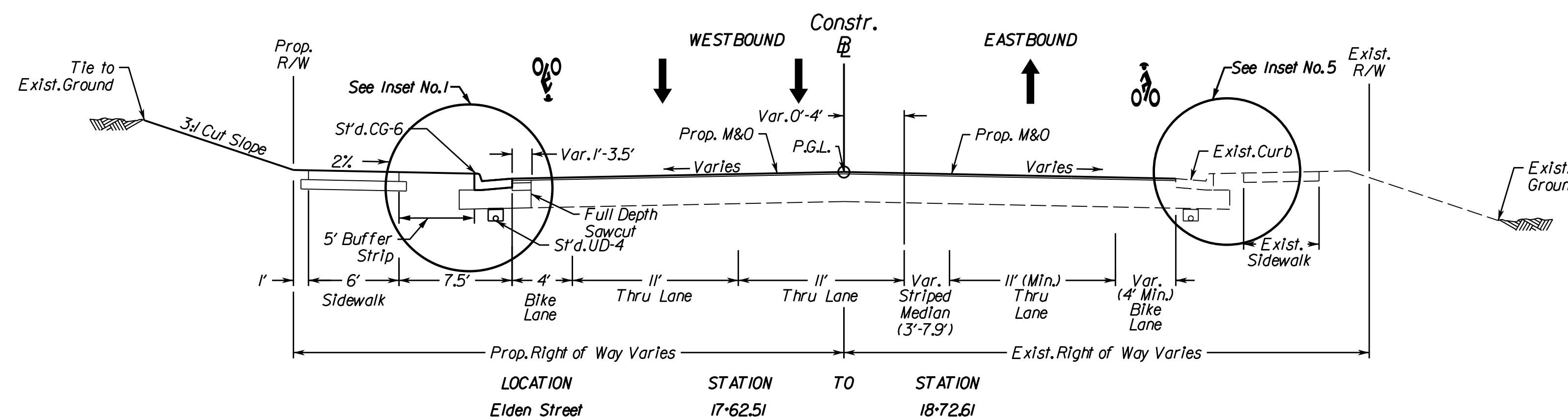
Typical Sections

(Not to Scale)

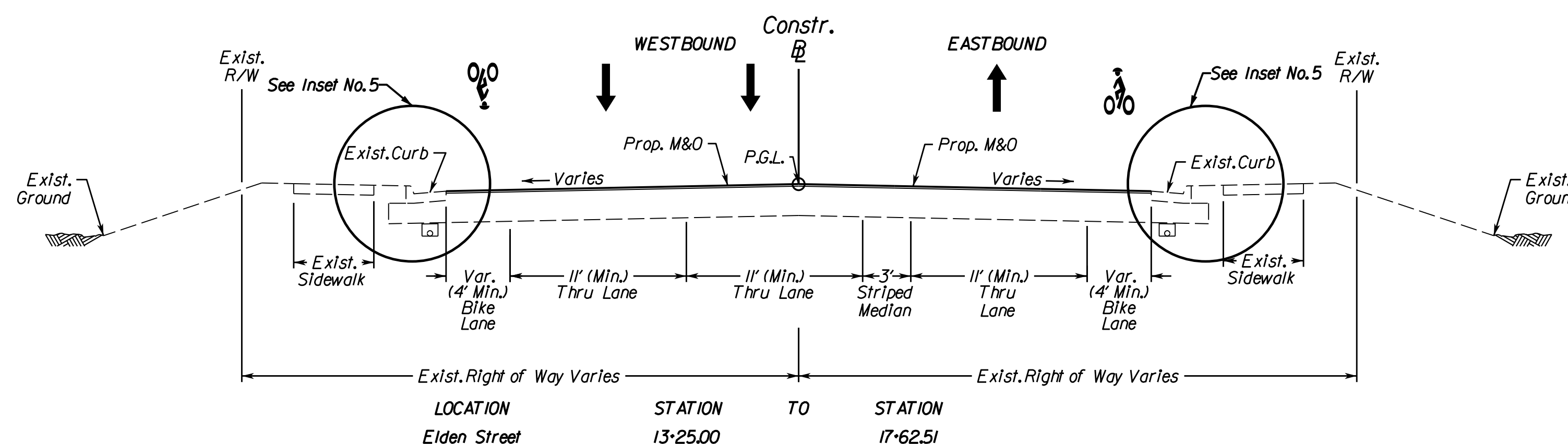
East Elden Street (Rte.606/Rte.6656) Normal Crown, 4 Lane Curb Section



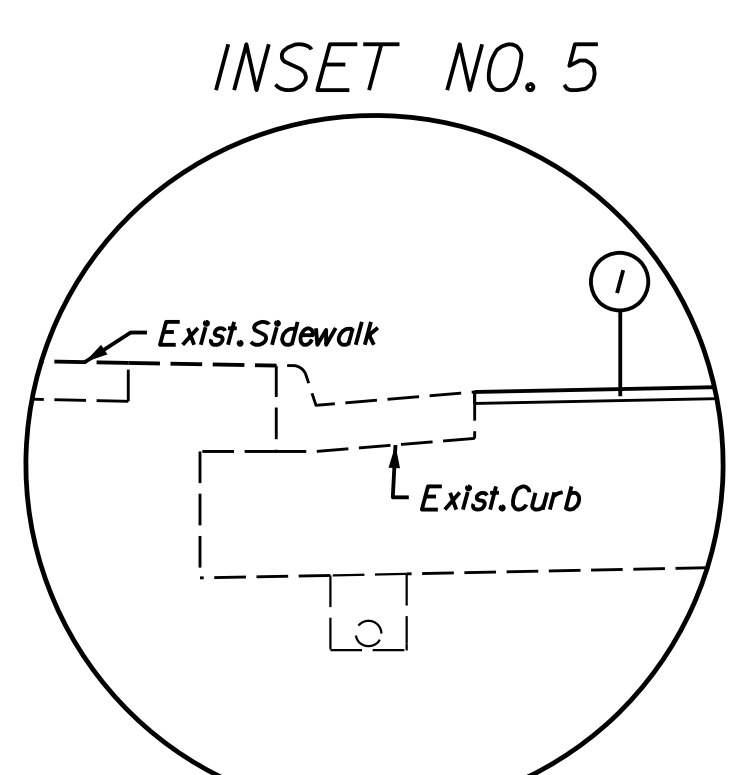
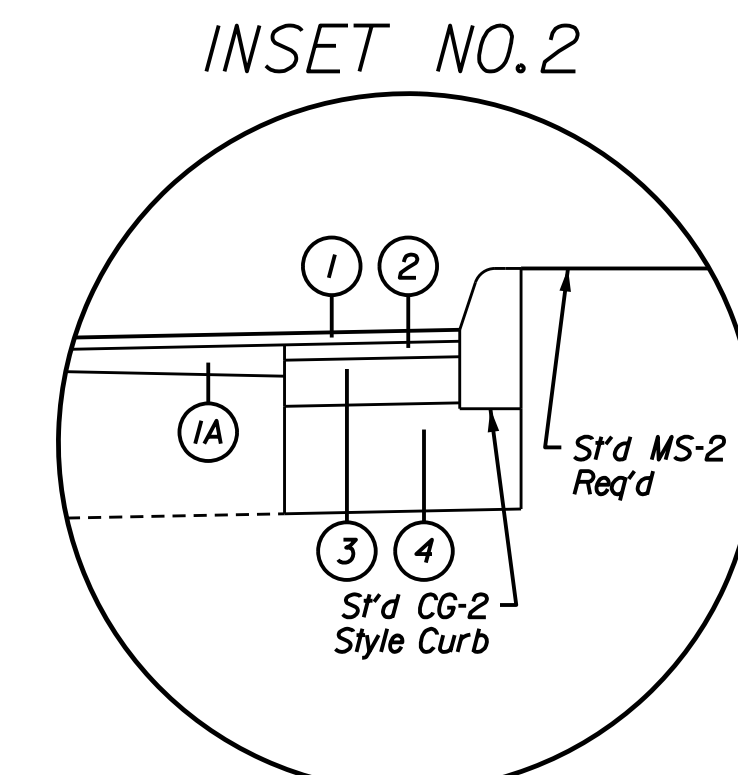
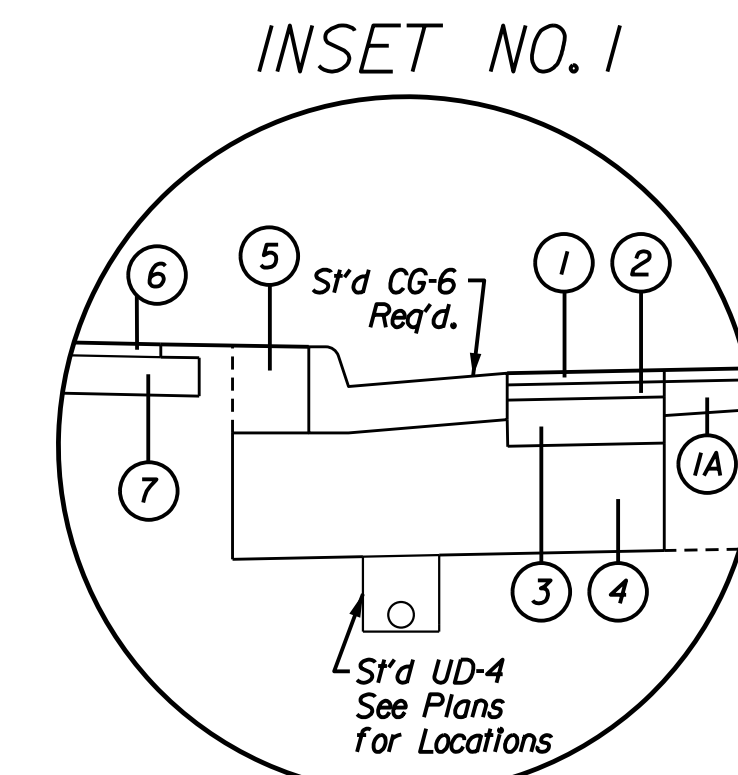
East Elden Street (Rte.606/Rte.6656) Normal Crown, 3 Lane Curb Section (Existing)



East Elden Street (Rte.606/Rte.6656) Normal Crown, 3 Lane Curb Section (Existing)



REVISED	STATE	ROUTE	PROJECT	SHEET NO.
	VA.	606/6656	U000-235-110 RW-201.C-501	2A
DESIGN FEATURES RELATING TO CONSTRUCTION OR TO REGULATION AND CONTROL OF TRAFFIC MAY BE SUBJECT TO CHANGE AS DEEMED NECESSARY BY THE DEPARTMENT				
Rinker Design Associates, P.C. Manassas, Virginia ROADWAY ENGINEER		Rinker Design Associates, P.C. Manassas, Virginia ROADWAY ENGINEER		



- ① Surface Course - 1.5" Asphalt Concrete, Type SM-9.5D estimated at 180 lbs/sqyd.
- ①A Pavement Build-up - See Sheet 2B(2) for detail. Existing pavement shall be milled 2" prior to Pavement Build-up.
- ② Intermediate Course - 2" Asphalt Concrete, Type IM-19.0A estimated at 240 lbs/sqyd.
- ③ Base Course - 6" Asphalt Concrete, Type BM-25.0A
- ④ Sub-Base Course - 1.4" Aggregate Base Material, Type I, Size No. 21B Connected to UD-4 edg drain beneath the curb and gutter.
- ⑤ Regular Fill Material to be compacted in accordance with VDOT Road and Bridge Specifications.
- ⑥ Sidewalk - (4") Class A3 Hydraulic Cement Concrete.
- ⑦ Base Course - (4") Aggregate Base Material Type I, Size 21B extended 6" beyond the edge of the sidewalk.

TYPICAL SECTION GENERAL NOTES

1. Pavement widening to be performed in accordance with VDOT S'd WP-2.
2. Milling of the existing pavement should consist of 2" minimum mill prior to any resurfacing/build-up.
3. See Profile Sheets for super-elevation transition ranges. See cross sections for cross slopes.

PROJECT	SHEET NO.
U000-235-110	2A

Rinker Design Associates, P.C.
 Civil Engineers
 Environmental Engineers
 Surveyors
 Right of Way Services
 10000 Rinker Road
 Manassas, VA 20108
 Phone: (703) 368-7373
 Fax: (703) 368-7374
 www.rinker.com

VDOT
 NORTH VIRGINIA
 DISTRICT