



ILLUSTRATIVE PURPOSES ONLY



**VIKA VIRGINIA, LLC**  
 ENGINEERS PLANNERS SURVEYORS  
 LANDSCAPE ARCHITECTS GEOMATICS  
 8180 GREENSBORO DRIVE SUITE 200  
 TYSONS, VIRGINIA 22102  
 PHONE: (703) 442-7800  
 FAX: (703) 761-2787  
 TYSONS, VA. GERMANTOWN, MD.

THE INFORMATION, DESIGN, AND CONTENT OF THESE DRAWINGS AND/OR DOCUMENTS HERETO ARE PROPRIETARY TO VIKA VIRGINIA, LLC AND CONSTITUTE ITS PROPRIETARY INTELLECTUAL PROPERTY. THESE DRAWINGS AND/OR DOCUMENTS MUST NOT BE FORWARDED, SHARED, COPIED, DIGITALLY CONVERTED, MODIFIED, OR USED FOR ANY PURPOSE, IN ANY FORMAT, WITHOUT PRIOR WRITTEN AUTHORIZATION FROM VIKA VIRGINIA, LLC. VIOLATIONS MAY RESULT IN PROSECUTION. ONLY APPROVED, SIGNED AND SEALED PLANS OR DRAWINGS MAY BE UTILIZED FOR CONSTRUCTION PURPOSES.

© 2019 VIKA VIRGINIA, LLC

OWNER:  
**FM HERNDON CORPORATE CENTER LLC.**  
 7200 WISCONSIN AVENUE, SUITE 100  
 BETHESDA, MD 20814  
 NEIL MARKUS  
 301-915-9460

APPLICANT:  
**STANLEY MARTIN COMPANIES, INC.**  
 14200 PARK MEADOW DRIVE, SUITE 100N  
 CHANTILLY, VA 20151  
 SOLEDAD PORTILLA  
 703-636-9237

APPLICANTS REPRESENTATIVE:  
**COOLEY, LLP.**  
 11951 FREEDOM DRIVE, SUITE 1500  
 RESTON, VA 20190  
 BRIAN WINTERHALTER ESQ.  
 703-456-8168

LANDSCAPE ARCHITECT:  
**VIKA VIRGINIA, LLC.**  
 8180 GREENSBORO DRIVE, SUITE 200  
 TYSONS, VA 20151  
 PETER RINEK  
 703-442-7800

TRAFFIC CONSULTANT:  
**GOROVE/SLADE ASSOCIATES, INC.**  
 3914 CENTREVILLE ROAD, SUITE 330  
 CHANTILLY, VA 20151  
 MARIA LASHINGER  
 703-787-9595

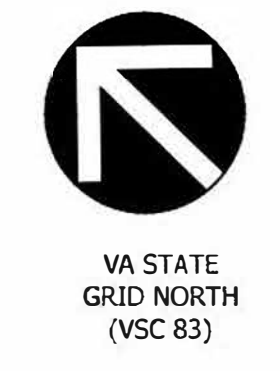


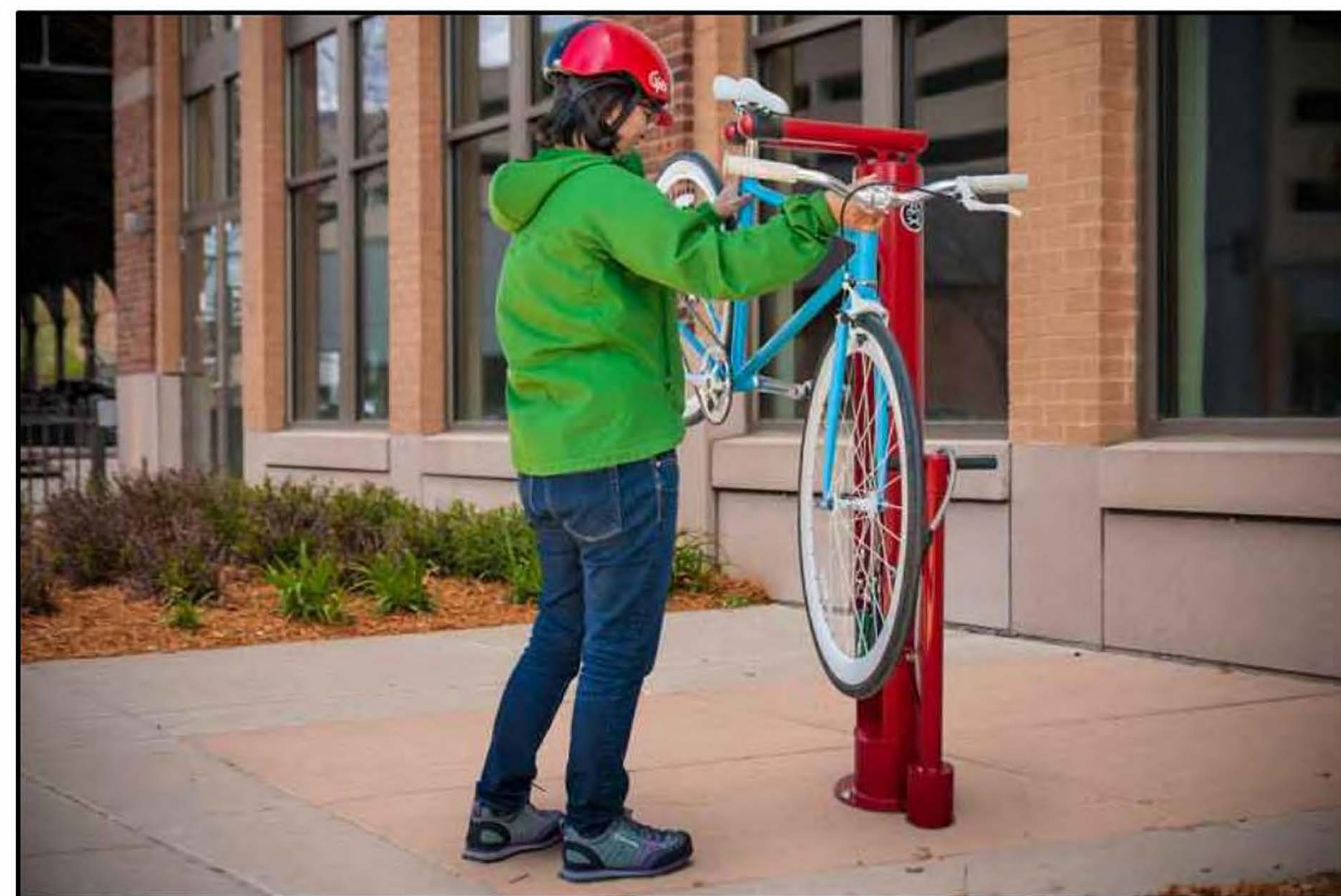
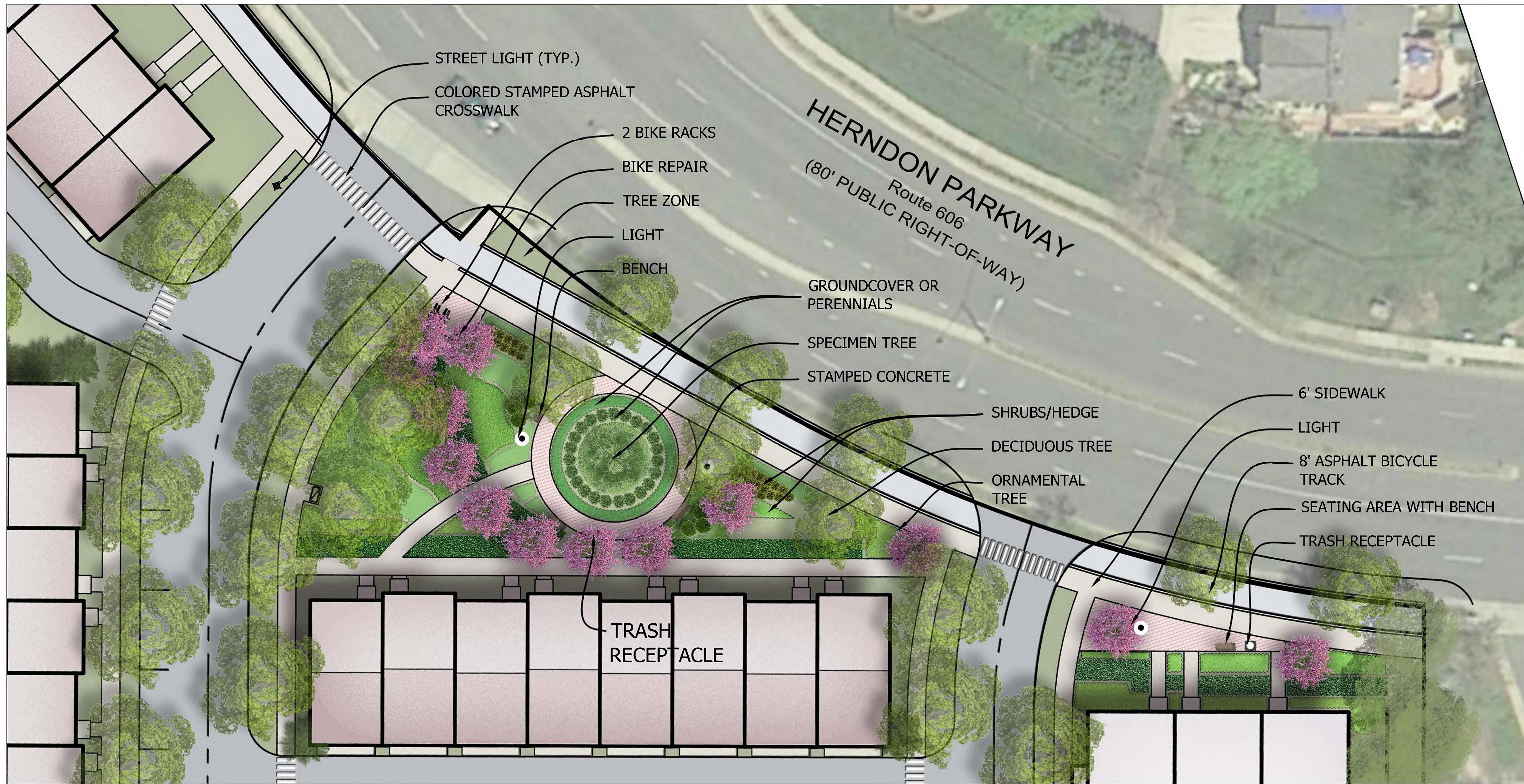
REVISIONS	DATE
ACCEPTANCE COMMENTS	03/27/2020

**PARK PLACE**  
 ZONING MAP  
 AMENDMENT  
 TOWN OF HERNDON, VA

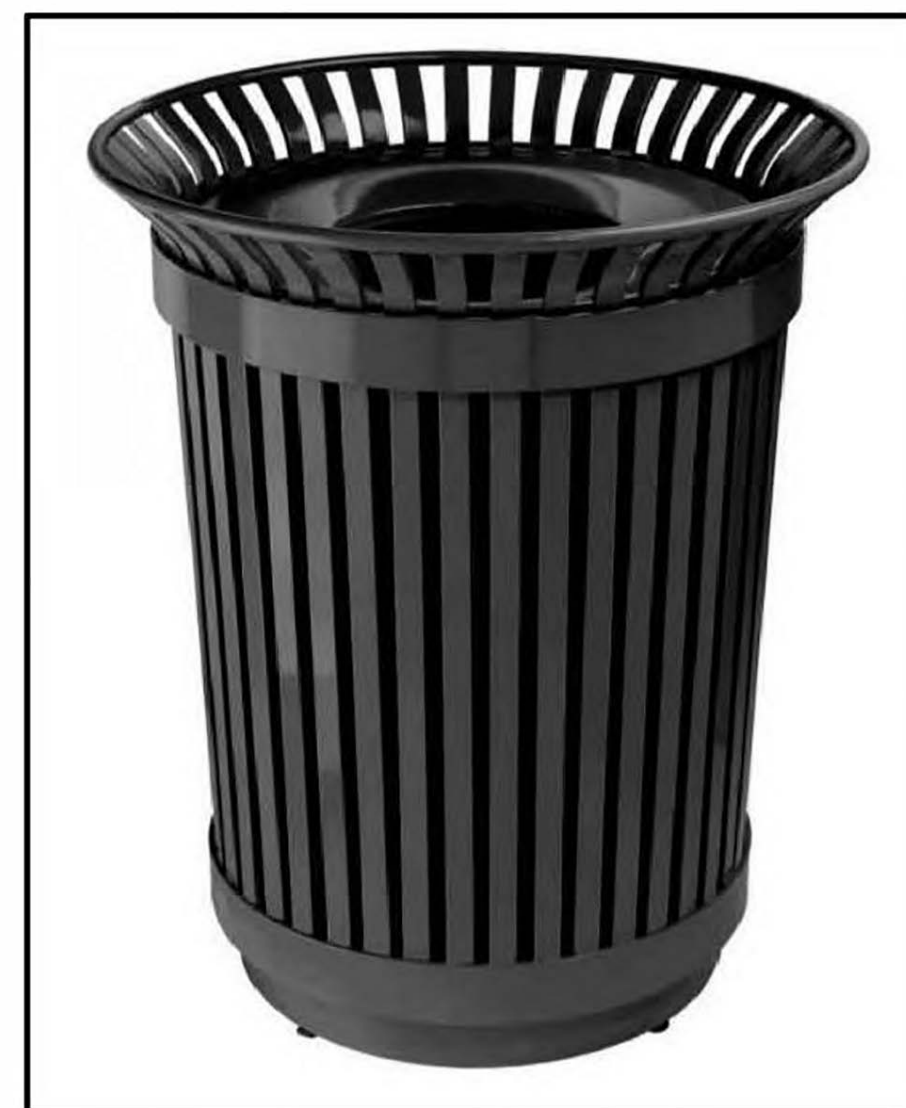
**OVERALL  
 ILLUSTRATIVE  
 PLAN**

DRAWN BY: \_\_\_\_\_  
 DESIGNED BY: PR  
 DATE ISSUED: OCTOBER 2, 2019  
 DWG. SCALE: \_\_\_\_\_  
 JOB NO.: VV8011D  
 SHEET NO.: L-01





BICYCLE REPAIR STATION



GARBAGE BIN

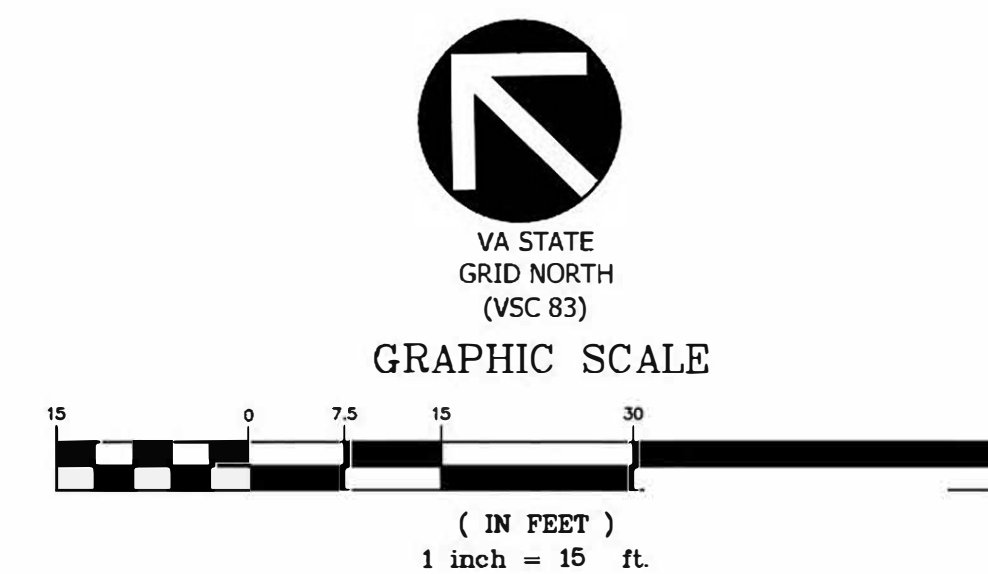


STREET LIGHT



PARK BENCH

NOTE: SITE FURNISHINGS TO CONFORM TO THE HERNDON STREETScape MANUAL.



ENGINEERS PLANNERS SURVEYORS  
LANDSCAPE ARCHITECTS GEOMATICS

VIVA VIRGINIA, LLC  
8180 GREENSBORO DRIVE SUITE 200  
TYSONS, VIRGINIA 22102  
PHONE: (703) 442-7800  
FAX: (703) 761-2787  
TYSONS, VA. GERMANTOWN, MD.

THE INFORMATION, DESIGN, AND CONTENT OF THESE DRAWINGS AND/OR DOCUMENTS HERETO ARE PROPRIETARY TO VIVA VIRGINIA, LLC AND CONSTITUTE ITS PROPRIETARY INTELLECTUAL PROPERTY. THESE DRAWINGS AND/OR DOCUMENTS MUST NOT BE FORWARDED, SHARED, COPIED, DIGITALLY CONVERTED, MODIFIED, OR USED FOR ANY PURPOSE, IN ANY FORMAT, WITHOUT PRIOR WRITTEN AUTHORIZATION FROM VIVA VIRGINIA, LLC. VIOLATIONS MAY RESULT IN PROSECUTION. ONLY APPROVED, SIGNED AND SEALED PLANS OR DRAWINGS MAY BE UTILIZED FOR CONSTRUCTION PURPOSES.

© 2019 VIVA VIRGINIA, LLC

OWNER:  
FM HERNDON CORPORATE CENTER LLC.  
7200 WISCONSIN AVENUE, SUITE 100  
BETHESDA, MD 20814  
NEIL MARKUS  
301-915-9460

APPLICANT:  
STANLEY MARTIN COMPANIES, INC.  
14200 PARK MEADOW DRIVE, SUITE 100N  
CHANTILLY, VA 20151  
SOLEDA PORTILLA  
703-636-9237

APPLICANTS REPRESENTATIVE:  
COOLEY, LLP.  
11951 FREEDOM DRIVE, SUITE 1500  
RESTON, VA 20190  
BRIAN WINTERHALTER ESQ.  
703-456-8168

LANDSCAPE ARCHITECT:  
VIVA VIRGINIA, LLC.  
8180 GREENSBORO DRIVE, SUITE 200  
TYSONS, VA 20151  
PETER RINEK  
703-442-7800

TRAFFIC CONSULTANT:  
GOROVE/SLADE ASSOCIATES, INC.  
3914 CENTREVILLE ROAD, SUITE 330  
CHANTILLY, VA 20151  
MARIA LASHINGER  
703-787-9595



REVISIONS	DATE
ACCEPTANCE COMMENTS	03/27/2020

PARK PLACE  
ZONING MAP  
AMENDMENT

TOWN OF HERNDON, VA

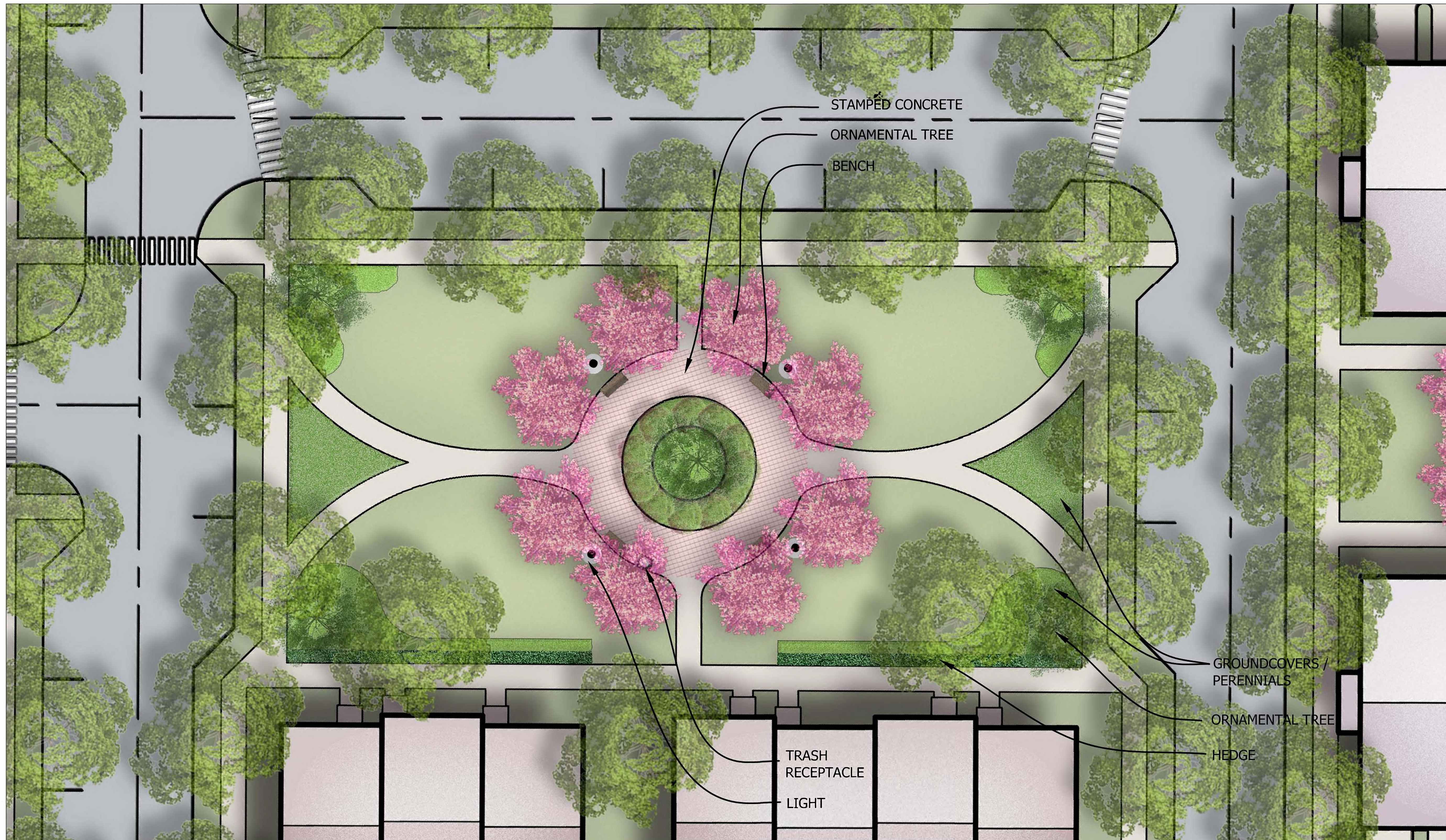
ENLARGEMENT  
OPEN SPACE 1

DRAWN BY: RYM  
DESIGNED BY: PR  
DATE ISSUED: OCTOBER 2, 2019

DWG. SCALE: AS SHOWN

JOB NO.: VV8011D

SHEET NO.: C-06A



ENGINEERS PLANNERS SURVEYORS  
 LANDSCAPE ARCHITECTS GEOMATICS  
 VIKA VIRGINIA, LLC  
 8180 GREENSBORO DRIVE SUITE 200  
 TYSONS, VIRGINIA 22102  
 PHONE: (703) 442-7800  
 FAX: (703) 761-2787  
 TYSONS, VA. GERMANTOWN, MD.

THE INFORMATION, DESIGN, AND CONTENT OF THESE DRAWINGS AND/OR DOCUMENTS HERETO ARE PROPRIETARY TO VIKA VIRGINIA, LLC AND CONSTITUTE ITS PROPRIETARY INTELLECTUAL PROPERTY. THESE DRAWINGS AND/OR DOCUMENTS MUST NOT BE FORWARDED, SHARED, COPIED, DIGITALLY CONVERTED, MODIFIED, OR USED FOR ANY PURPOSE, IN ANY FORMAT, WITHOUT PRIOR WRITTEN AUTHORIZATION FROM VIKA VIRGINIA, LLC. VIOLATIONS MAY RESULT IN PROSECUTION. ONLY APPROVED, SIGNED AND SEALED PLANS OR DRAWINGS MAY BE UTILIZED FOR CONSTRUCTION PURPOSES.

© 2019 VIKA VIRGINIA, LLC

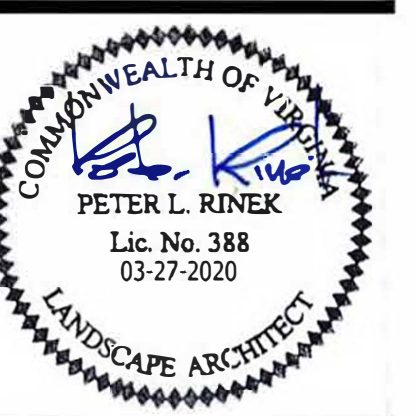
OWNER:  
 FM HERNDON CORPORATE CENTER LLC.  
 7200 WISCONSIN AVENUE, SUITE 100  
 BETHESDA, MD 20814  
 NEIL MARKUS  
 301-915-9460

APPLICANT:  
 STANLEY MARTIN COMPANIES, INC.  
 14200 PARK MEADOW DRIVE, SUITE 100N  
 CHANTILLY, VA 20151  
 SOLEDAD PORTILLA  
 703-636-9237

APPLICANTS REPRESENTATIVE:  
 COOLEY, LLP.  
 11951 FREEDOM DRIVE, SUITE 1500  
 RESTON, VA 20190  
 BRIAN WINTERHALTER ESQ.  
 703-456-8168

LANDSCAPE ARCHITECT:  
 VIKA VIRGINIA, LLC.  
 8180 GREENSBORO DRIVE, SUITE 200  
 TYSONS, VA 20151  
 PETER RINEK  
 703-442-7800

TRAFFIC CONSULTANT:  
 GOROVE/SLADE ASSOCIATES, INC.  
 3914 CENTREVILLE ROAD, SUITE 330  
 CHANTILLY, VA 20151  
 MARIA LASHINGER  
 703-787-9595

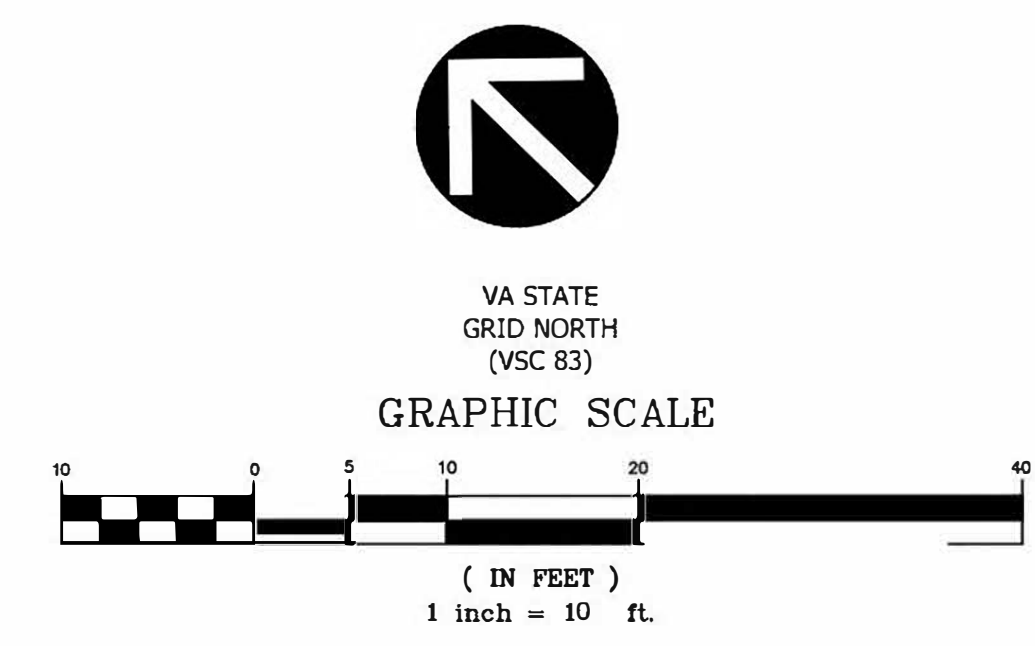


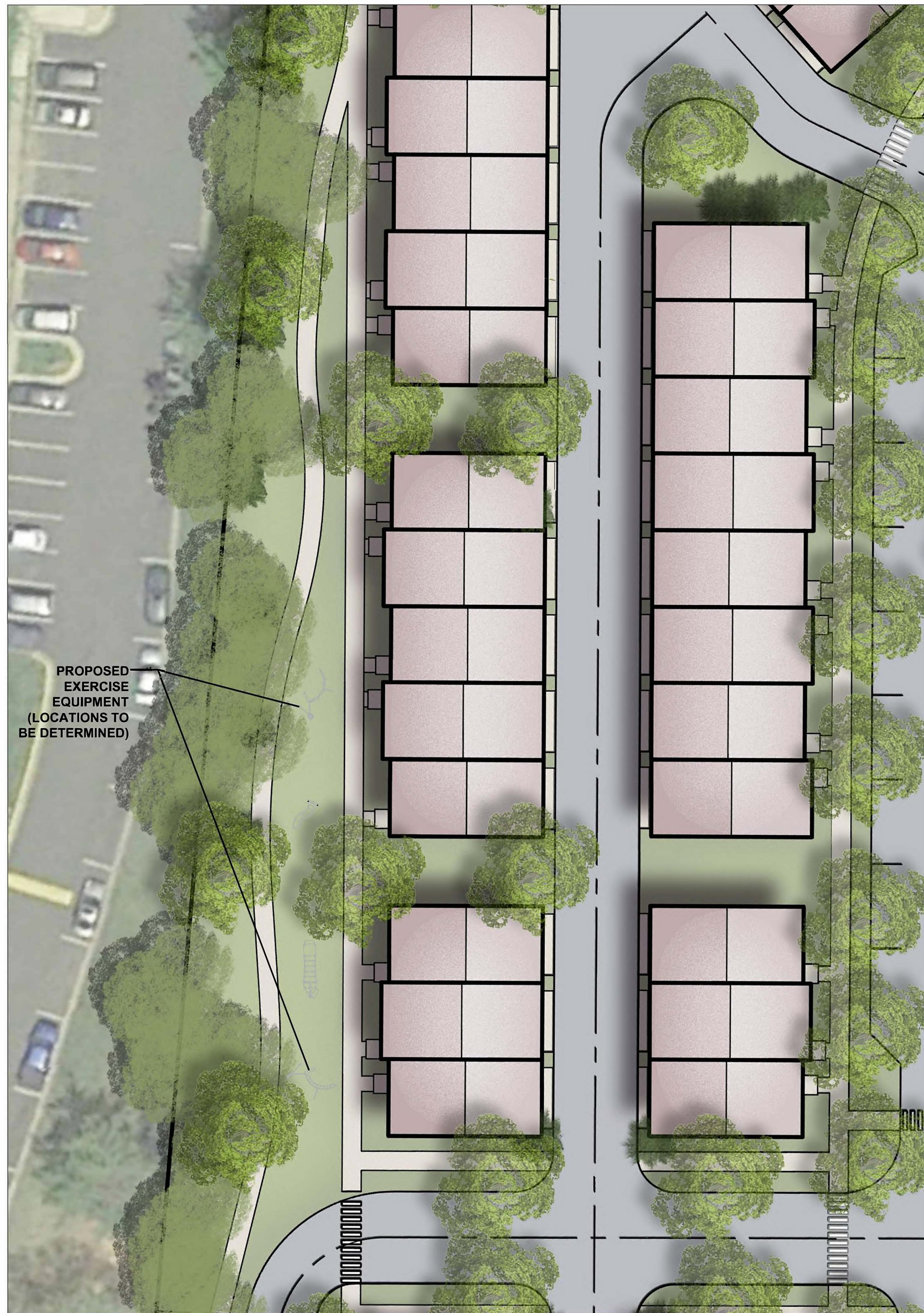
REVISIONS	DATE
ACCEPTANCE COMMENTS	03/27/2020

**PARK PLACE**  
 ZONING MAP  
 AMENDMENT  
 TOWN OF HERNDON, VA

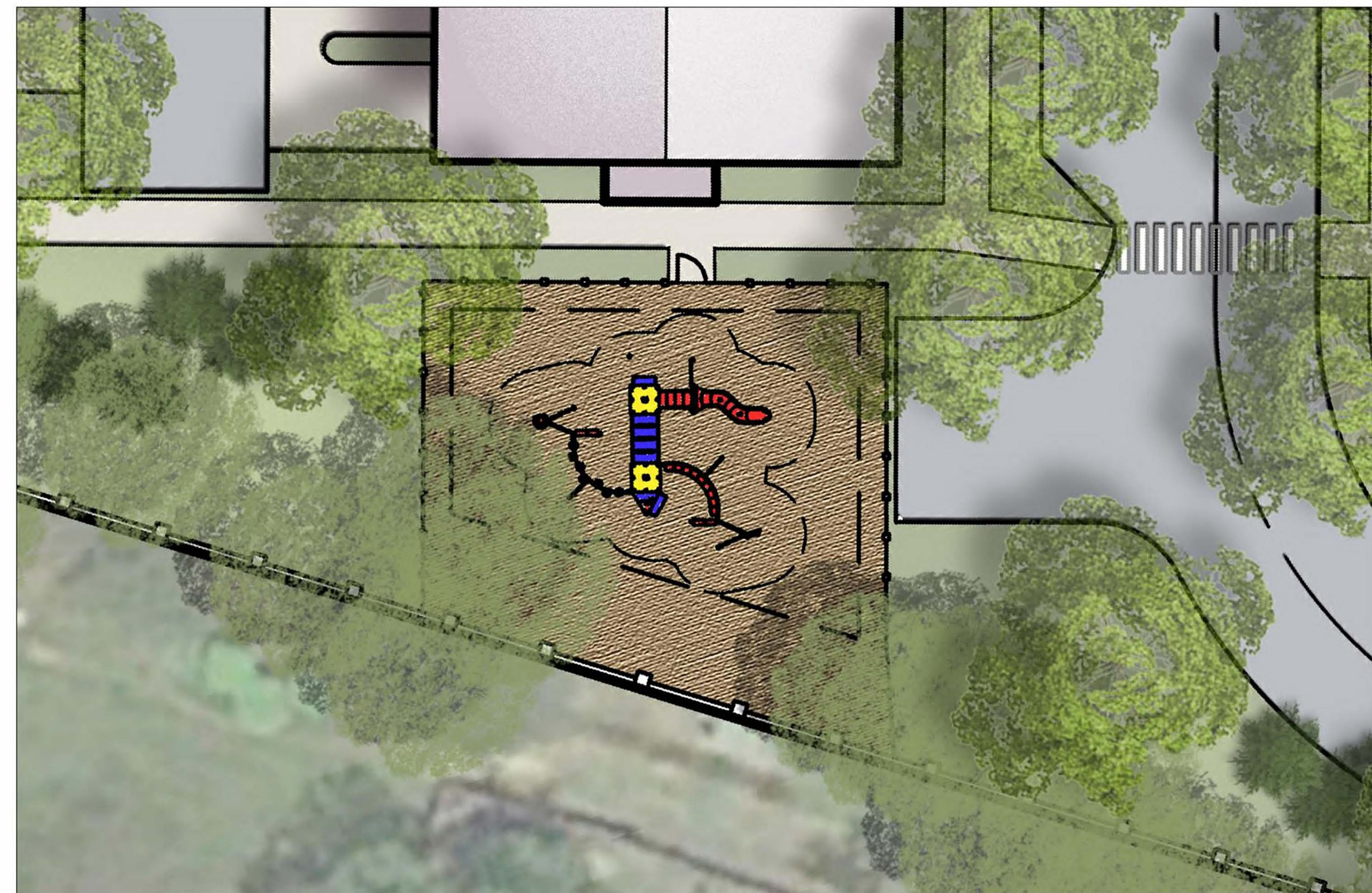
**ENLARGEMENT**  
 OPEN SPACE 4

DRAWN BY:	RYM
DESIGNED BY:	PR
DATE ISSUED:	OCTOBER 2, 2019
DWG. SCALE:	AS SHOWN
JOB NO.:	VV8011D
SHEET NO.:	C-06B

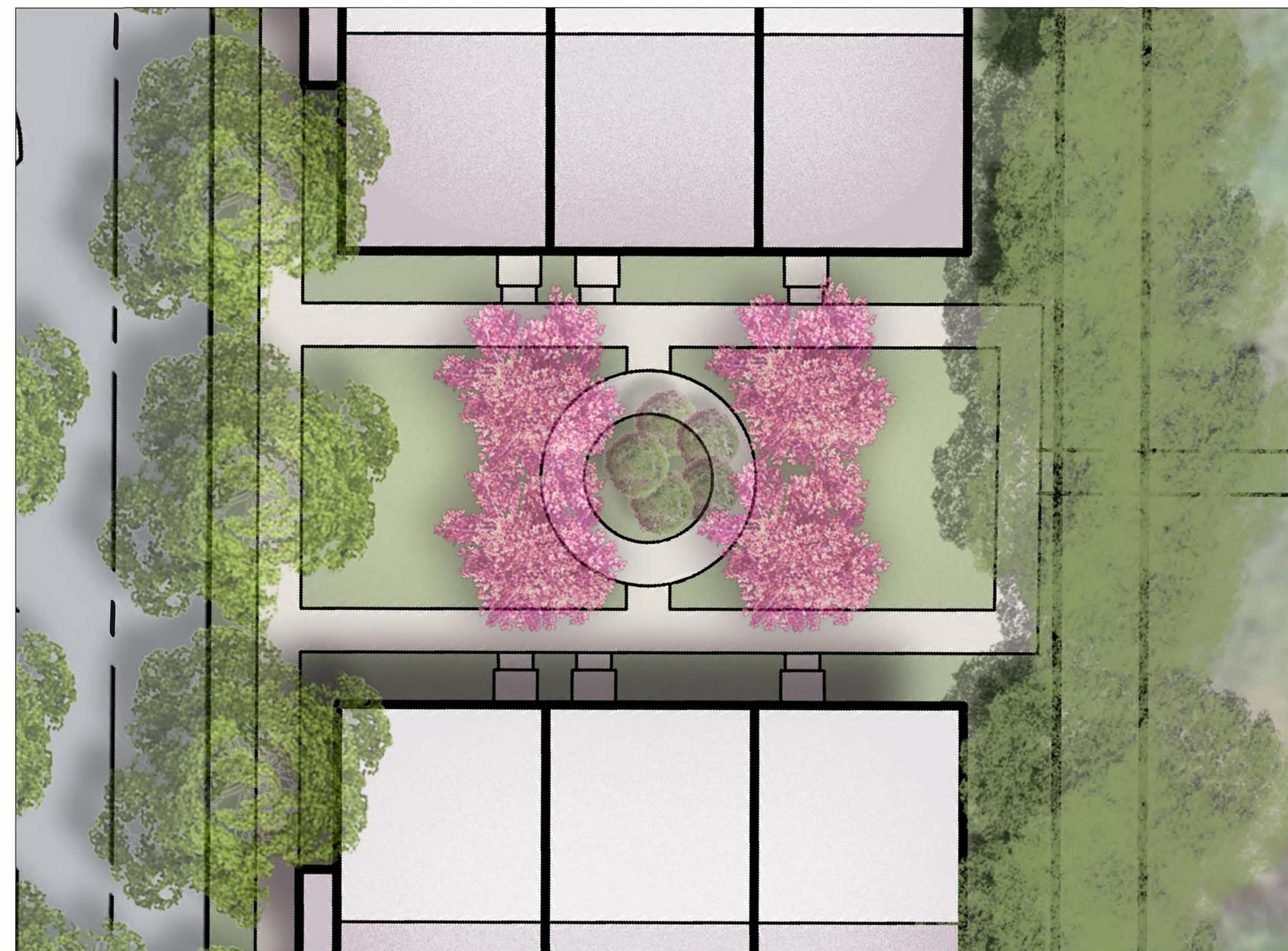




**PROPOSED TRAIL - OPEN SPACE 2**



**PROPOSED TOTLOT - OPEN SPACE 3**



**PROPOSED OPEN SPACE 5**



**VIVA**  
ENGINEERS PLANNERS SURVEYORS  
LANDSCAPE ARCHITECTS GEOMATICS  
VIVA VIRGINIA, LLC  
8180 GREENSBORO DRIVE SUITE 200  
TYSONS, VIRGINIA 22102  
PHONE: (703) 442-7800  
FAX: (703) 761-2787  
TYSONS, VA. GERMANTOWN, MD.

THE INFORMATION, DESIGN, AND CONTENT OF THESE DRAWINGS AND/OR DOCUMENTS HERETO ARE PROPRIETARY TO VIVA VIRGINIA, LLC AND CONSTITUTE ITS PROPRIETARY INTELLECTUAL PROPERTY. THESE DRAWINGS AND/OR DOCUMENTS MUST NOT BE FORWARDED, SHARED, COPIED, DIGITALLY CONVERTED, MODIFIED, OR USED FOR ANY PURPOSE, IN ANY FORMAT, WITHOUT PRIOR WRITTEN AUTHORIZATION FROM VIVA VIRGINIA, LLC. VIOLATIONS MAY RESULT IN PROSECUTION. ONLY APPROVED, SIGNED AND SEALED PLANS OR DRAWINGS MAY BE UTILIZED FOR CONSTRUCTION PURPOSES.

© 2019 VIVA VIRGINIA, LLC

OWNER:  
**FM HERNDON CORPORATE CENTER LLC.**  
7200 WISCONSIN AVENUE, SUITE 100  
BETHESDA, MD 20814  
NEIL MARKUS  
301-915-9460

APPLICANT:  
**STANLEY MARTIN COMPANIES, INC.**  
14200 PARK MEADOW DRIVE, SUITE 100N  
CHANTILLY, VA 20151  
SOLEDAD PORTILLA  
703-636-9237

APPLICANTS REPRESENTATIVE:  
**COOLEY, LLP.**  
11951 FREEDOM DRIVE, SUITE 1500  
RESTON, VA 20190  
BRIAN WINTERHALTER ESQ.  
703-456-8168

LANDSCAPE ARCHITECT:  
**VIVA VIRGINIA, LLC.**  
8180 GREENSBORO DRIVE, SUITE 200  
TYSONS, VA 20151  
PETER RINEK  
703-442-7800

TRAFFIC CONSULTANT:  
**GOROVE/SLADE ASSOCIATES, INC.**  
3914 CENTREVILLE ROAD, SUITE 330  
CHANTILLY, VA 20151  
MARIA LASHINGER  
703-787-9595



REVISIONS	DATE
ACCEPTANCE COMMENTS	03/27/2020

**PARK PLACE**  
ZONING MAP  
AMENDMENT  
TOWN OF HERNDON, VA

**ENLARGEMENT**  
OPEN SPACE 2, 3  
AND 5

DRAWN BY: RYM  
DESIGNED BY: PR  
DATE ISSUED: OCTOBER 2, 2019  
DWG. SCALE: AS SHOWN  
JOB NO.: VV8011D  
SHEET NO.: C-06C



## PARK PLACE ELEVATIONS



TYPICAL SIDE ELEVATION  
(HIGH VISIBILITY SIDE ELEVATION)



TYPICAL REAR ELEVATIONS



TYPICAL SIDE ELEVATION WITH  
OPT. ROOFTOP TERRACE & UTILITY SHED

# Park Place 2 over 2 TH elev





FRONT ELEVATION

**PARK PLACE**  
20' WIDE REAR LOAD GARAGE TH'S



SIDE ELEVATION



REAR ELEVATION



SIDE ELEVATION - HIGH VISIBILITY

# Park Place 20 TH elev

